

BIO'L



BIO'L IS A NATURE-BASED PERSONAL CARE BRAND FOR CONSUMERS WHO ARE SEEKING COSMETIC, HEALTH, AND PERSONAL CARE PRODUCTS.

THE FORMULATIONS AND DESIGNS OF THESE PRODUCTS ARE INSPIRED BY NATURE, TAKING INTO ACCOUNT THE DIVERSE NEEDS OF THE TARGET MARKET.

BIO'L FOR WHO YOU ARE!

[VIEW PRODUCTS](#)



CHOOSE AN OPTION

10 IN 1 MIRACLE

HAIR
CONDITIONER

NOURISHING
HAIR MASK

REVITALIZING
HAIR MASK

HAIR
MASK

SHAMPOO 3 IN 1

SHAMPOO
THERAPY

SHAMPOO

10 IN 1 MIRACLE

ICE CREAM
HAIR LOTION

HAIR
LOTION

2-PHASE
HAIR SERUM

OIL HAIR SERUM

WATER THERAPY

HAIR
SERUM

HAIR GEL

HAIR SPRAY

HAIR MOUSSE

GEL WAX

HAIR
STYLING

HAIR COLOR

OXIDANT CREAM

DECOLOR POWDER

HAIR
COLOR



CHOOSE AN OPTION

DEODORANT
BODY SPRAY

DEODORANT

BODY LOTION

BODY SHAMPOO

WOMEN
CARE

MILK CREAM

ZERO OIL
GEL CREAM

NATURAL CREAM

MOISTURIZING
CREAM

MAKEUP REMOVER
WET WIPES

FACE WASH

FACE AND
MAKEUP
CLEANER

LIP CARE BALM

LIP CARE
BALM

BODY SPRAY

DEODORANT

SHAVING FOAM

AFTER SHAVE

BODY SHAMPOO

MEN CARE



HAIR CONDITIONER



10 IN 1 MIRACLE HAIR LOTION
SUITABLE FOR ALL HAIR
TYPES & KERATIN HAIR



VOL: 200 ml
Art No.480441200

- 1 • Detangles hair (combing made easy)
- 2 • Frizz control
- 3 • Prevents static hair
- 4 • Improves hair elasticity
- 5 • Deep Conditioner
- 6 • Makes the hair silky soft & Shiny
- 7 • Damage Control
- 8 • Improves hair texture
- 9 • Breakage control
- 10 • Deep Moisturizer

- Sulfate-free
- Paraben-free

How to use: After washing your hair with shampoo, apply a generous amount of BIOL 10in Miracle Hair Conditioner to damp hair, focusing on the ends. Rinse thoroughly after 5 minutes and enjoy the silky, smooth results!



NOURISHING HAIR MASK

ALOE VERA NOURISHING HAIR MASK SUITABLE FOR DRY AND FRIZZY HAIR

- Contains aloe vera, niacin, and vitamins A, C, and E
- Hydrates hair strands and controls dryness & frizz



x12

VOL: 500 ml
Art No. 48044855



COCOA NOURISHING HAIR MASK FOR DYED AND DAMAGED HAIR

- Contains Cocoa extract
- Strengthens and oxygenates damaged hair cells



x12

VOL: 500 ml
Art No. 48044815



- Sulfate free
- Nourishes hair strands
- Prevents hair damage
- Enriched with hydrolyzed keratin
- Enriched with argan oil to strengthen hair cuticles

How to use: After washing your hair with shampoo, apply a generous amount of BIO'L hair mask to damp hair, focusing on the ends. Rinse thoroughly after 5 minutes and enjoy the silky, smooth results!



NOURISHING HAIR MASK

PEACH AND WHEAT GERM NOURISHING HAIR MASK SUITABLE FOR DRY AND CURLY HAIR

- Contains peach and wheat germ extract and milk protein and vitamins A,B,C and E



x12

VOL: 500 ml
Art No.48044835



MILK AND HONEY NOURISHING HAIR MASK SUITABLE FOR DRY AND DAMAGED HAIR

- Contains Honey extract and milk protein and vitamins A,B,C and E
- Nourishes and repairs hair shaft



x12

VOL: 500 ml
Art No. 48044845



- Sulfate free
- Nourishes hair strands
- Prevents hair damage
- Enriched with hydrolyzed keratin
- Enriched with argan oil to strengthen hair cuticles

How to use: After washing your hair with shampoo, apply a generous amount of BIO'L hair mask to damp hair, focusing on the ends. Rinse thoroughly after 5 minutes and enjoy the silky, smooth results!



REVITALIZING HAIR MASK

REVITALIZING HAIR MASK POMEGRANATE EXTRACT SUITABLE FOR DYED AND DAMAGED HAIR

- Contains pomegranate extract, vitamins A, B, C, E, and keratin
- Repairs damages due to hair dye along with hair glowing effect



x12

VOL: 800 ml

Art No. 4804468



x24

VOL: 200 ml

Art No. 4804462



REVITALIZING HAIR MASK WHEAT GERM EXTRACT SUITABLE FOR DRY AND DAMAGED HAIR

- Contains wheat germ extract, vitamins A, B, and E and minerals
- Repairs dry and damaged hair shaft



x12

VOL: 800 ml

Art No. 4804468



x24

VOL: 200 ml

Art No. 4804478



- Sulfate free
- Revitalizing and repairing damaged hair
- Enriched with herbal extracts, vitamins, and keratin

How to use: After washing your hair with shampoo, apply a generous amount of BIO'L hair mask to damp hair, focusing on the ends. Rinse thoroughly after 5 minutes and enjoy the silky, smooth results!



LOW SHAMPOO CREAM



VOL: 250 ml
Art No. 48046612

- With 3in1 action (shampoo, conditioner and hair mask)
- Creamy texture with gentle lather
- Effectively removes 100% of impurities and scalp oil
- 2x more softness and 4x more conditioning after drying
- Suitable for all hair types: straight, curly, bleached, or colored
- Free from sulfates, silicones, sodium chloride, and parabens
- Enriched with guar and argan oil

How to use: Massage an appropriate amount of shampoo onto damp hair and rinse after 2 minutes.



SHAMPOO THERAPY



VOL: 400 ml
Art No. 4804634



VOL: 400 ml
Art No. 48044624



VOL: 400 ml
Art No. 4804614

THREE TYPES OF GENTLE AND SULFATE FREE BIO'L

SHAMPOO WITH THERAPY TECHNOLOGY

- **COLOR THERAPY** enhances shine, makes hair color last longer, and protects hair, repairs hair shaft damage
- **HYDRO THERAPY** protects moisture in hair and scalp, strong moisturizer, deep conditioner, anti frizz, repairing, and revitalizing for hair
- **DAMAGE THERAPY** protects the health of dry and damaged hair, professional repair, improving flexibility, rebuilding and rejuvenating the hair shaft
- free from sulfate, parabens, silicone and sodium chloride

How to use: massage an appropriate amount of shampoo onto damp hair and rinse after 2 minutes, for better results, use Bio'l Water Therapy Conditioner after washing to hydrate the hair



10 IN 1 SPRAY



10 IN 1 MIRACLE HAIR LOTION SUITABLE FOR ALL HAIR TYPES



VOL: 400 ml
Art No. 48044134



VOL: 240 ml
Art No. 48044132

- Leave-in hair lotion (no-rinse)
 - Sulfate free
1. Detangles hair (combing made easy)
 2. Heat Protection
 3. Prevents static hair
 4. Adds to hair shine (contains vitamin B5)
 5. Moisturizes and nourishes
 6. Makes the hair silky soft
 7. Repairs damaged hair strands
 8. Smoothens hair
 9. Prevents split ends and damage
 10. Strengthens hair

How to use: After leaving the shower, apply Biol 10 in 1 lotion on damp or dry hair focusing on hair strands. No rinse is required. To prevent heat damage, applying before blow drying and ironing is recommended.



HAIR ICECREAM



ICE CREAM HAIR LOTION
WITH BISCUIT ICE CREAM SCENT
SUITABLE FOR NORMAL TO DRY HAIR



x24

VOL: 400 ml
Art No. 48044114



x24

VOL: 250 ml
Art No. 48044114/250

- Leave-in hair lotion (no-rinse)
- Sulfate free
- Strengthens and repairs hair
- Conditions the hair
- Anti-frizz and split ends
- Contains keratin and hydrolyzed protein
- Enriched with herbal oils and extracts
- Contains argan oil, grapeseed oil, shea butter oil, olive oil, wheat germ extract and aloe vera extract
- Extra moisturizing and hair strengthening

How to use: After leaving the shower, apply Biol ice cream hair lotion on damp or dry hair and massage the hair. No rinse is required.



HAIR ICECREAM



ICE CREAM HAIR LOTION
WITH COCOA ICE CREAM SCENT
SUITABLE FOR DRY AND DAMAGED HAIR



x24

VOL: 400 ml
Art No. 48044111



x24

VOL: 250 ml
Art No. 48044111/250

- Leave-in hair lotion (no-rinse)
- Sulfate free
- Strengths and repairs hair
- Conditions the hair
- Anti-frizz and split ends
- Contains keratin and hydrolyzed protein
- Enriched with herbal oils and ingredients
- Contains argan oil, grapeseed oil, hazelnut oil, wheat germ extract and cedar extract
- Moisturizing and conditioning frizzy and dry hair

How to use: After leaving the shower, apply Biol ice cream hair lotion on damp or dry hair and massage the hair. No rinse is required.



HAIR ICECREAM



ICE CREAM HAIR LOTION
WITH COFFEE ICE CREAM SCENT
SUITABLE FOR DRY AND DAMAGED HAIR



x24

VOL: 400 ml
Art No. 48044112



x24

VOL: 250 ml
Art No. 48044112/250

- Leave-in hair lotion (no-rinse)
- Sulfate free
- Strengths and repairs hair
- Conditions the hair
- Anti-frizz and split ends
- Contains keratin and hydrolyzed protein
- Enriched with herbal oils and ingredients
- Contains argan oil, jojoba oil, coconut oil, ginseng extract and chamomile extract
- Strengthening and revitalising damaged and dyed hair

How to use: After leaving the shower, apply Biol ice cream hair lotion on damp or dry hair and massage the hair. No rinse is required.



2-PHASE SERUM

2-PHASE ARGAN HAIR SERUM SUITABLE FOR EXTREMELY DRY AND DAMAGED HAIR

- Contains Argan Oil, Keratin, Vitamin B5, Protein and Minerals
- Silky conditioner to restore softness to dry hair and prevent split ends



VOL: 250 ml
Art No. 48043762



2-PHASE ALOE VERA HAIR SERUM SUITABLE FOR DYED AND DAMAGED HAIR

- Contains aloe vera extract, keratin, vitamin B5, protein and minerals
- Anti-frizz, refreshing and repairing damaged and colored hair



VOL: 250 ml
Art No. 48043752



- Two-phase hair serum spray
- Protects against thermal shock from straightening and blow-drying
- Protects hair from UV rays
- Contains keratin and herbal ingredients
- Revitalizing and hydrating

How to use: Shake well until both phases are combined. Then apply on dry or damp hair. It is recommended to use this product before styling hair with a hair dryer, hair iron or other types of heat-styling tools.



HAIR SERUM



x24

VOL: 80 ml
Art No.4804580



x24

VOL: 80 ml
Art No.48045280

RICE BRAN & GRAPE SEED OIL

JOJBA & MACADAMIA OIL

- Shining protect hair serum oil
 - Suitable for all types of hair, especially colored and damaged hair
 - With anti-frizz and hair-breakage properties, makes the hair shiny
 - Can be used with hair styling tools for better styling
 - Light formulation with fast absorption
 - Free of alcohol, parabens and sulfate
- Suitable for all types of hair, especially curly hair
 - With softening and repairing properties
 - Light formulation with fast absorption
 - Anti-frizz and breakage for hair texture
 - Can be used with hair styling tools for better styling
 - Free of alcohol, parabens and sulfate

How to use: After taking a bath, massage the appropriate amount of this product on the hair shaft, especially the hair tips. This product prevents frizz and dryness with strong hydration.



WATER THERAPY



x12

VOL: 200 ml
Art No.48043112

- Hair detangler
- Makes hair easier to comb through
- Creating a protective layer against heat (hair iron, blow dryer)
- Deep conditioning and hydration
- Keeps the hair hydrated and soft until the next bath
- Helps restore the health of the damaged hair
- Controls frizz and improves hair manageability
- Makes the hair as shiny as silk
- The best choice for keeping your hair manageable and frizz free in humid environment
- Enriched with hydrolyzed oat protein and keratin
- Free of sulfate, paraben, sodium chloride and silicone
- Suitable for all types of hair, especially dry, tangled, damaged and long hair

How to use: Use 2-3 times a week on damp hair after shampooing. 1 dose (20 ml) for fine to medium hair, 2-3 doses (40-60 ml) for thick to curly hair, add another dose (20 ml) if you have long hair. You may feel a pleasant warmth when the product is activated by water. Wait 8 seconds and then rinse.



HAIR STYLING GEL



EXTRA STRONG HAIR STYLING GEL



x6

VOL: 700 ml
Art No. 4802217



x24

VOL: 200 ml
Art No. 4802212

- Keeps the hair in place without flaking
- Enriched with vitamin B5 and hydrolyzed keratin

How to use: Apply the gel evenly throughout your hair, focusing on the areas that need the most hold or definition.



HAIR STYLING GEL



ULTRA STRONG HAIR STYLING GEL

AQUA HOLD HAIR STYLING GEL



VOL: 200 ml
Art No.4802262



VOL: 200 ml
Art No.4802222

- Keeps the hair in place without flaking
- Enriched with vitamin B5 and hydrolyzed keratin

How to use: Apply the gel evenly throughout your hair, focusing on the areas that need the most hold or definition.



HAIR SPRAY

ULTRA STRONG HAIR STYLING SPRAY



x24

VOL: 250 ml
Art No. 4802332



x24

VOL: 500 ml
Art No. 4802335



EXTRA STRONG HAIR STYLING SPRAY



x24

VOL: 250 ml
Art No. 4802312



x24

VOL: 500 ml
Art No. 4802315

- Water-resistant hair styling spray
- Non-sticky and non-flaking
- Enriched with vitamin B5

How to use: Shake well before use. Hold the can about 30 cm away from your hair and spray.



HAIR MOUSSE



x12

VOL: 200 ml
Art No. 4802622

- High holding power
- Suitable for all types of hair (curly, curly, straight, etc.)
- Hair softener and volumizer
- Light-weight formula without feeling heavy on the hair
- Removes hair frizz
- Gives the hair a Shiny and silky look

How to use: Shake well before use on clean and semi-wet hair. Use the appropriate amount on your hair and style the hair. If you have thin hair, apply this product to the root of your hair and use volumizing technics to make it look fuller and thicker. For curly hair, pour the appropriate amount onto your hand and apply it on the hair until there is no frizz.



GEL WAX



EXTRA STRONG HAIR STYLING GEL WAX



VOL: 150 ml
Art No. 48025115

- Natural finish
- Strong hold



PROFESSIONAL HAIR COLOR



PROFESSIONAL HAIR COLOR



x36

VOL: 100 ml

- With a broad range of colors
- Enriched with hydrolyzed keratin
- Enriched with almond oil, sesame oil, wheat germ oil, and Vitamin B
- The most optimum amount of ammonia for maintaining the hair's health

How to use: Based on your desired hair color, for every 150ml of the hair color, mix 100ml of oxidant cream and apply the combination on your sectioned hair.

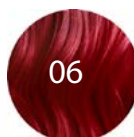
VARIASION

BIOL HAIR COLOR
CHART



HAIR COLOR CORRECTOR

CORRECTOR



RED
RED CORRECTOR



BLUE
BLUE CORRECTOR
(ANTI ORANGE)



ASH
CORRECTOR



GREEN
GREEN CORRECTOR
ANTI RED



SILVER
SILVER CORRECTOR
(ANTI YELLOW)

HAIR COLOR CORRECTOR



VOL: 100 ml

- 5 variations of pure hair dye to mix and create new hair color combinations

**BIO'L HAIR COLOR
CHART**



BIOL HAIR COLOR CHART

SELECT YOUR COLOR OF CHOICE

EXTRA
BLONDE

LIGHT
PLATINUM

NATURAL

PEARL

HEMP

CHOCOLATE

LENTIL

MATT

WALNUT

MEAT

SANDY

FASHION CLUB

HONEY

PURPLE

CHESTNUT

SUPER BLONDE

BEIGE

COPPER

NESCAFE

LIVER

OCHER

CARAMEL

RED FIRE

ASH

CAPPUCCINO

RED MAHOGANY

BISCUIT

MAHOGANY

BURGANDY RED

HAZELNUT

CHOCOLATE
HONEY

ORANG
CHOCOLATE

GOLDEN

TOBACCO




use these buttons to explore
more colors








HAIR
COLOR


NATURAL


- 

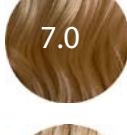
N1
BLACK
- 


N2
BURNED BROWN
- 


N3
DARK BROWN
- 


N4
MEDIUM BROWN
- 

N5
LIGHT BROWN
- 

N6
DARK NATURAL
BLONDE
- 


N7
MEDIUM NATURAL
BLONDE
- 


N8
LIGHT NATURAL BLONDE
- 


N9
VERY LIGHT NATURAL
BLONDE
- 

N10
PLATINUM NATURAL
BLONDE


CHOCOLATE

- 

CH5
LIGHT CHOCOLTE
BROWN
- 


CH6
DARK CHOCOLATE
BLONDE
- 


CH7
MEDIUM CHOCOLATE
BLONDE
- 


CH8
LIGHT CHOCOLATE
BLONDE
- 

CH9
VERY LIGHT
CHOCOLATE BLONDE

WALNUT

- 

6WALNUT
DARK WALNUT BLONDE
- 

8WALNUT
LIGHT WALNUT
BLONDE
- 

10WALNUT
PLATINUM NUT
BLONDE





FASHION CLUB



9.RG ROSE GOLD



7.AR AUTUMN RED



10.CP COOL PLATINE



8.BB BUTTERY BLONDE



5.SM SHINY MAROON



8.LB LEATHER BLONDE



9.MF OLIVE



7.PC PINK COPPER



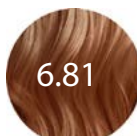
6.AF AMBER



8.PCL CARMIN PASTEL

HAIR COLOR

CHESTNUT



6W
DARK CHESTNUT
BLONDE



8W
LIGHT CHESTNUT
BLONDE

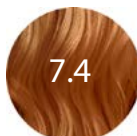
COPPER



C5
VERY DARK COPPER



C6
DARK COPPER

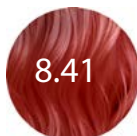


C7
LIGHT COOPER

OCHRE



60C
DARK OCHRE
BLONDE



80C
LIGHT MEAT
BROWN





HAIR
COLOR

ASH



A1
BLUE BLACK



A5
LIGHT ASH BROWN



A6
DARK ASH BLONDE



A7
MEDIUM ASH
BLONDE



A8
LIGHT ASH
BLONDE



A9
VERY LIGHT ASH
BLONDE

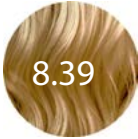


A10
PLATINUM ASH
BLONDE

BISCUIT

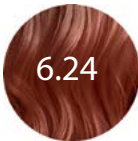


6TC
DARK TERRA CITTA
BLONDE

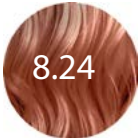


8TC
LIGHT TERRA CITTA
BLONDE

HAZELNUT



6HAZELNUT
DARK HAZELNUT BLONDE

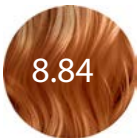


8HAZELNUT
LIGHT HAZELNUT
BLONDE

ORANGE CHOCOLATE



6OR
DARK ORANGE
CHOCOLATE BLONDE



8OR
LIGHT ORANGE
CHOCOLAT BLONDE





HAIR
COLOR

LIGHT PLATINUM



N11
LIGHT PLATINUM
BLONDE



A11
LIGHT PLATINUM ASH
BLONDE



P11
LIGHT PLATINUM ASH PEARL
BLONDE



S11
LIGHT PLATINUM
SANDY BLONDE



11LENTIL
LIGHT PLATINUM
LENTIL BLONDE



CH11
LIGHT PLATINUM
CHOCOLATE BLONDE

HEMP



7HEMP
MEDIUM HEMP
BLONDE



9HEMP
VERY LIGHT
HEMP BLONDE

MATT



M4
MEDIUM MATT



M5
LIGHT MATT



M6
DARK MATT BLONDE



M7
MEDIUM MATT
BLONDE



M8
LIGHT MATT
BLONDE



M9
VERY LIGHT MATT
BLONDE



M10
PLATINUM MATT
BLONDE

SANDY



S7
MEDIUM SANDY
BLONDE




S9
VERY LIGHT SANDY
VIOLET







HAIR
COLOR

PURPLE


- 


5.22
V5
DARK VIOLET
- 


7.22
V7
MEDIUM VIOLET
- 

9.22
V9
VERY LIGHT VIOLET

BEIGE

- 

6.32
B6
DARK BEIGE BLONDE
- 

8.32
B8
LIGHT BEIGE BLONDE
- 

10.32
B10
PLATINUM BEIGE BLONDE


LIVER


- 


6.59
6L
DARK LIVER BLONDE
- 

8.59
8L
LIGHT LIVER BLONDE

RED FIRE


- 


4.66
R4
BURNED RED FIRE
- 


6.66
R6
DARK RED FIRE
- 

8.66
R8
MEDIUM RED FIRE

RED MAHOGANY


- 


4.65
4RM
MEDIUM VIOLET RED MAHOGANY
- 

5.65
5RM
LIGHT RED MAHOGANY
- 

7.65
7RM
EXTRA LIGHT RED VIOLET MAHOGANY

BURGUNDY RED

- 

4.62
RV4
BURNED BURGUNDY RED
- 


6.62
RV4
BURNED BURGUNDY RED








HAIR
COLOR

GOLDEN

- 


8.3
G8
LIGHT GOLDEN
BLONDE
- 


9.3
G9
VERY LIGHT GOLDEN
BLONDE
- 


7.3
G7
MEDIUM GOLDEN
BLONDE
- 

6.3
G6
DARK GOLDEN BLONDE

CHOCOLATE HONEY

- 

6.83
6CH.HONEY
DARK CHOCOLATE
HONEY BLONDE
- 

8.83
8CH.HONEY
LIGHT CHOCOLATE
HONEY BLONDE
- 

10.83
10CH.HONEY
PLATINUM CHOCOLATE HON-
EY BLONDE

EXTRA BLONDE

- 

0010
ONS
EXTRA NATURAL
SILVER
- 

0023
OSB
EXTRA
SILVER BEIGE
- 

0033
OSL
EXTRA SUNLIGHT
- 

0082
ONSH
EXTRA NATURAL
SHELL
- 

0012
ONC
EXTRA NATURAL
CRYSTAL
- 

000
WHITE
EXTRA WHITE
NATURE

PEARL

- 

7.21
P7
MEDIUM PEARL BLONDE
- 

9.21
P9
VERY LIGHT
PEARL BLONDE






HAIR
COLOR

LENTIL




7LENTIL
MEDIUM LENTIL BLONDE




9LENTIL
VERY LIGHT
LENTIL BLONDE

MEAT

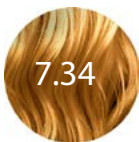


7MT
MEDIUM MEAT
BLONDE




5MT
LIGHT MEAT BROWN

HONEY




H7
MEDIUM HONEY
BLONDE



H9
VERY LIGHT HONEY
BLONDE

SUPER BLONDE




N12
VERY LIGHT PLATINUM SUPER
BLONDE



CH.A12
VERY LIGHT PLATINUM
CHOCOLATE ASH S.B



12.02
V.L. PLATINUM NATURAL
PEARL SUPER B.




AN12
VERY LIGHT PLATINUM
ASH NATURAL SUPER B

NESCAFE



6NES
DARK NESCAFE BLONDE



8NES
LIGHT NESCAFE
BLONDE

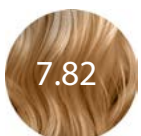


10NES
PLATINUM NESCAFE
BLONDE



HAIR COLOR

CARAMEL

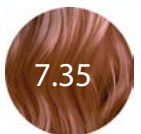


CA7
7.82
MEDIUM CARAMEL
BLONDE



CA9
9.82
VERY LIGHT
CARAMEL BLONDE

CAPPUCCINO



7CAPO
7.35
MEDIUM CAPPUCCINO
BLONDE

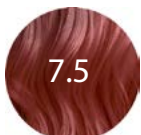


9CAPO
9.35
VERY LIGHT
CAPPUCCINO BLONDE

MAHOGANY



5MAHOGANY
5.5
DARK MAHOGANY



7MAHOGANY
7.5
MEDIUM MAHOGANY




9 MAHOGANY
9.5
VERY LIGHT
MAHOGANY






- Suitable for covering gray hair and for enhancing the tone with maximum protection





 VOL: 150 ml
x60 Art No. 25/150

 VOL: 700 ml
x12 Art No. 25/700

- Suitable for covering gray hair and for enhancing the tone with maximum protection
- Contains Olive oil





 VOL: 150 ml
x60 Art No. 25G/150

 VOL: 700 ml
x12 Art No. 25G/700

- Suitable for covering gray hair and for enhancing the tone with maximum protection
- With anti-red effect



 VOL: 150 ml
x60 Art No. 25R/150

 VOL: 700 ml
x12 Art No. 25R/700



CREAM PEROXIDE



3% Suitable for damaged and dyed hair



x3

VOL: 3750 ml
Art No. 10/3750



x12

VOL: 700 ml
Art No. 10/700



x60

VOL: 150 ml
Art No. 10/150



6% Suitable for creating the closest result to the color chart and covering gray hair



x3

VOL: 3750 ml
Art No.20/3750



x12

VOL: 700 ml
Art No.20/700



x60

VOL: 150 ml
Art No. 20/150



CREAM PEROXIDE



9% Suitable for creating the closest result to the color chart and covering gray hair in the shortest amount of time



VOL: 3750 ml
Art No. 30/3750



VOL: 700 ml
Art No. 30/700



VOL: 150 ml
Art No. 30/150



12% Suitable for creating a result that is lighter than the color chart and covering gray hair in the shortest amount of time



VOL: 3750 ml
Art No. 40/3750



VOL: 700 ml
Art No. 40/700



VOL: 150 ml
Art No. 40/150



DECOLOR



WHITE DECOLOR POWDER
SUITABLE FOR THIN AND DAMAGED HAIR



x6

VOL: 1500 gr
Art No. 480121500



x12

VOL: 500 gr
Art No. 48012500



x50

VOL: 50 gr
Art No. 4801250



BLUE DECOLOR POWDER
SUITABLE FOR NORMAL HAIR



x6

VOL: 1500 gr
Art No. 480111500



x12

VOL: 500 gr
Art No. 48011500



x50

VOL: 50 gr
Art No. 4801150

- Enriched with herbal gum to control dust



WOMEN BODY SPRAY



Hold Me



VOL: 150 ml
Art No. 4805411061



Complete Me



VOL: 150 ml
Art No. 4805411071



Proud Of Me



VOL: 150 ml
Art No. 4805411041



Remember Me



VOL: 150 ml
Art No. 4805411051



Stay With Me



VOL: 150 ml
Art No. 4805411051

Body Spray for Women

- Long lasting scent
- With Various and popular scents
- Non-staining on clothes
- Environment friendly
- Hypoallergenic ingredients



DEO-ROLLON WOMAN



Beauty Touch



Fresh Touch



Soft Touch



VOL: 150 ml
x72 Art No. 4805431527



VOL: 175 ml
x72 Art No. 4805431517



VOL: 75 ml
x72 Art No. 4805431507

- Anti-perspiration
- Body freshner
- 24-hour care



BODY LOTION



MILKY HONEY BODY LOTION
SUITABLE FOR EXTREMELY
DRY SKIN



x12

VOL: 250 ml
Art No. 48098112



MILKY MANGO BODY LOTION
SUITABLE FOR DRY AND
NORMAL SKIN



x12

VOL: 250 ml
Art No. 48098122

- Fast-absorbing
- Paraben free
- Ideal for daily use



BODY SHAMPOO



Milky Honey Body Wash
Suitable for extremely dry skin



VOL: 400 ml
Art No. 48097214



Milky Mango Body Wash
Suitable for dry and normal skin



VOL: 400 ml
Art No. 48097224



Lemongrass Body Wash
Suitable for all skin types



VOL: 400 ml
Art No. 48097124



Pink sea salt Body Wash
Suitable for normal to oily skin



VOL: 400 ml
Art No. 48097114

- Paraben Free
- Deep moisture & hydration
- Suitable for sensitive skin



MILK CREAM

Oat Milk Moisturizing Cream

Enriched with oat extract and vitamin B3



x24

VOL: 200 ml
Art No.480942122



Shea Milk Moisturizing Cream

Enriched with Shea Butter and Vitamin B5



x24

VOL: 200 ml
Art No. 480943122



Coconut Milk Moisturizing Cream

Enriched with Coconut oil and Collagen



x24

VOL: 200 ml
Art No.480941122



- A moisturizing cream with a rich texture and nourishing properties
- Suitable for normal to dry skin types
- Infused with hydrolyzed milk protein
- With warm and sweet scents

How to use: Use a sufficient amount on a clean area of your skin and massage until completely absorbed. For the best results, use this hand, face, and body cream on a daily basis.



Oat Milk Moisturizing Cream

Enriched with oat extract and vitamin B3



x24

VOL: 200 ml
Art No.480942122



Shea Milk Moisturizing Cream

Enriched with Shea Butter and Vitamin B5



x24

VOL: 200 ml
Art No. 480943122

Coconut Milk Moisturizing Cream

Enriched with Coconut oil and Collagen



x24

VOL: 200 ml
Art No.480941122

MILK CREAM



- A moisturizing cream with a rich texture and nourishing properties
- Suitable for normal to dry skin types
- Infused with hydrolyzed milk protein
- With warm and sweet scents

How to use: Use a sufficient amount on a clean area of your skin and massage until completely absorbed. For the best results, use this hand, face, and body cream on a daily basis.



ZERO OIL CREAM

Aloe vera Gel Cream

Hydrating dry skin



VOL: 200 ml
Art No. 480931122



Royal Jelly Gel Cream

Hydrating all skin types



VOL: 200 ml
Art No. 480932122



Silk Protein Gel Cream

Hydrating oily skin



VOL: 200 ml
Art No. 480933122



- A light and oil-free texture
- Fast-absorbing gel cream
- Ideal as a makeup base primer

How to use: Use a sufficient amount on a clean area of your skin and massage until completely absorbed. For the best results, use this hand, face, and body cream on a daily basis.



Aloe vera Gel Cream

Hydrating dry skin



VOL: 70 ml
Art No. 4809311127



Royal Jelly Gel Cream

Hydrating all skin types



VOL: 70 ml
Art No. 4809312127

Silk Protein Gel Cream

Hydrating oily skin



VOL: 70 ml
Art No. 480931327

ZERO OIL CREAM



- A light and oil-free texture
- Fast-absorbing gel cream
- Ideal as a makeup base primer

How to use: Use a sufficient amount on a clean area of your skin and massage until completely absorbed. For the best results, use this hand, face, and body cream on a daily basis.



NATURAL CREAM



ROSEHIP NATURAL CREAM
MOISTURIZING NORMAL SKIN



x20

VOL: 60 ml
Art No. 48091236



x36

VOL: 250 ml
Art No. 48091232/2



x24

VOL: 200 ml
Art No. 48091230200

- Nature-infused moisturizing cream enriched with plant-based extracts
- Suitable for face, hands, and body
- With extra creamy milky texture
- Enriched with Rosehip extract and avocado oil

How to use: Apply on clean skin and massage until the nutritious substances are completely absorbed. For the best results, use this hand, face, and body cream on a daily basis.



NATURAL CREAM



MATCHA NATURAL
MOISTURIZING CREAM
FOR DRY AND
EXTREMELY DRY SKIN



x20

VOL: 60 ml
Art No. 480933460



x36

VOL: 250 ml
Art No. 4809334250



x24

VOL: 200 ml
Art No. 4809334200

- Nature-infused moisturizing cream enriched with plant-based extracts
- Suitable for face, hands, and body
- With extra creamy milky texture
- Enriched with matcha extract and macadamia oil

How to use: Apply on clean skin and massage until the nutritious substances are completely absorbed. For the best results, use this hand, face, and body cream on a daily basis.



NATURAL CREAM



ARGAN OIL NATURAL CREAM
MOISTURIZING DRY SKIN



x20

VOL: 60 ml
Art No. 48091216



x36

VOL: 250 ml
Art No. 48091212/2



x24

VOL: 200 ml
Art No. 48091210200

- Nature-infused moisturizing cream enriched with plant-based extracts
- Suitable for face, hands, and body
- With extra creamy milky texture
- Enriched with argan oil and mirabilis jalapa extract

How to use: Apply on clean skin and massage until the nutritious substances are completely absorbed. For the best results, use this hand, face, and body cream on a daily basis.



COSMETIC WET WIPES

Argan Oil Cosmetic Wet Wipes

Suitable for dry & very dry skin



20 WIPES
Art No. 48095122

Rosehip Cosmetic Wet Wipes

Suitable for normal to dry skin



20 WIPES
Art No.48095132

Tea Tree Cosmetic Wet Wipes

Suitable for oily skin



20 WIPES
Art No.48095112



- Deep pore cleansing effect & hydrator
- Infused with plant-based ingredients

How to use: Simply remove a wipe from the packaging and gently wipe it over your skin, focusing on areas where makeup, dirt, or oil tend to accumulate. No rinse is required.

Chamomile Cosmetic Wet Wipes

Suitable for removing eye makeup



20 WIPES
Art No.48095112



- Enriched with soothing chamomile
- Anti-allergic, hydrating, and perfect for the sensitive area around the eyes.

How to use: Gently press down one wipe over your eyelids and lashes. After a few seconds, gently wipe the area until all traces of makeup have been lifted. No rinse is required.



FACE WASH

CREAMY FACE WASH SUITABLE FOR DRY & NORMAL SKIN

- Enriched with jojoba oil
- Creamy face wash with moisturizing ingredients for cleansing and nourishing the skin



x12

VOL: 380 ml
Art No. 480913323

VOL: 140 ml

Art No. 48091331140



x24



GEL FACE WASH SUITABLE FOR OILY SKIN

- Enriched with chia seed extract
- Gel face wash for deep pore cleansing and oil control



x12

VOL: 380 ml
Art No. 480913313

VOL: 140 ml

Art No. 480913311



x24



- Gentle face cleanser with a deep cleansing effect
- Alcohol, paraben, and soap free
- Restores skin's natural moisture

How to use: Gently massage BIO'L face wash into your skin using circular motions for a few seconds. Rinse thoroughly with cool water and pat dry with a soft towel.



FRUITY LIP BALM

CHERRY



x72

WET: 3.5 gr
Art No. 480941043



BERRY



x72

WET: 3.5 gr
Art No. 480941063



STRAWBERRY



x72

WET: 3.5 gr
Art No. 480941013



PROTECTIVE LIP BALM

- Moisturizing and nourishing lip balm
- UV protection SPF 15
- Suitable as a lip primer before applying lipstick

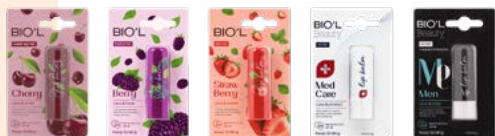


MED CARE LIP BALM

MED CARE



WET: 3.5 gr
Art No. 480941073



MEN CARE



WET: 3.5 gr
Art No. 480942043



PROTECTIVE LIP BALM

- Moisturizing and nourishing lip balm
- UV protection SPF 15
- Suitable as a lip primer before applying lipstick



MEN BODY SPRAY



YES ME

Art No. 4805412011



ALL OF ME

Art No. 4805412141



COUNT ON ME

Art No. 4805412091



FOLLOW ME

Art No. 4805412051



HUG ME

Art No. 4805412161



LIKE ME

Art No. 4805412171



TALK TO ME

Art No. 4805412131



YOU & ME

Art No. 4805412111



VOL: 150 ml

Body Spray for Men

- Long-lasting scent
- With Various and popular scents
- Non-staining on clothes
- Environment friendly
- Hypoallergenic ingredients



DEO-ROLLON



ACTIVE COMFORT

Attractive woody and floral aroma



VOL: 75 ml
x72 Art No. 48097214



COOL SILVER

With a woody, warm and bitter aroma



VOL: 75 ml
x72 Art No. 48097224



ENERGY RECHARGE

attractive, energizing fragrance



VOL: 75 ml
x72 Art No. 48097124



FRESH PLUS

With fresh, cool, and citrus aroma



VOL: 75 ml
x72 Art No. 48097114

- With Antiperspirant properties
- Non-sticky and non-greasy formulation
- Lasts 24 hours



SHAVING FOAM



COOLING COMFORT
SUITABLE FOR ALL SKIN TYPES



VOL: 200 ml
Art No.480531122



SENSITIVE COMFORT
SUITABLE FOR SENSITIVE SKIN



VOL: 200 ml
Art No.480531112

- Paraben-free
- Sulfate-free
- No artificial dye or scent
- Infused with mint extract for 2in1 performance; moisturizing + refreshing

- Paraben-free
- Sulfate-free
- No artificial dye or scent
- Infused with soothing aloe vera extract to protect from skin allergies



AFTER SHAVE



COOL SILVER



x12

VOL: 110 ml
Art No.480531112



SENSITIVE COMFORT



x12

VOL: 110 ml
Art No.480531112

- Protects and hydrates the skin
- Prevents skin sensitivity Soothes sensitive skin
- Alcohol, paraben and paraffin free



BODY SHAMPOO



ENERGY RECHARGE
attractive,
energizing fragrance



VOL: 480 gr
Art No. 48097214



FRESH PLUS
With fresh, cool,
and citrus aroma



VOL: 480 gr
Art No. 48097224



ACTIVE COMFORT
Attractive woody
and floral aroma



VOL: 480 gr
Art No. 48097124



COOL SILVER
With a woody, warm
and bitter aroma



VOL: 480 gr
Art No. 48097114

- easily lathers
- keeps your skin moisturized
- Excellent cleaning power
- Easy to wash off the skin